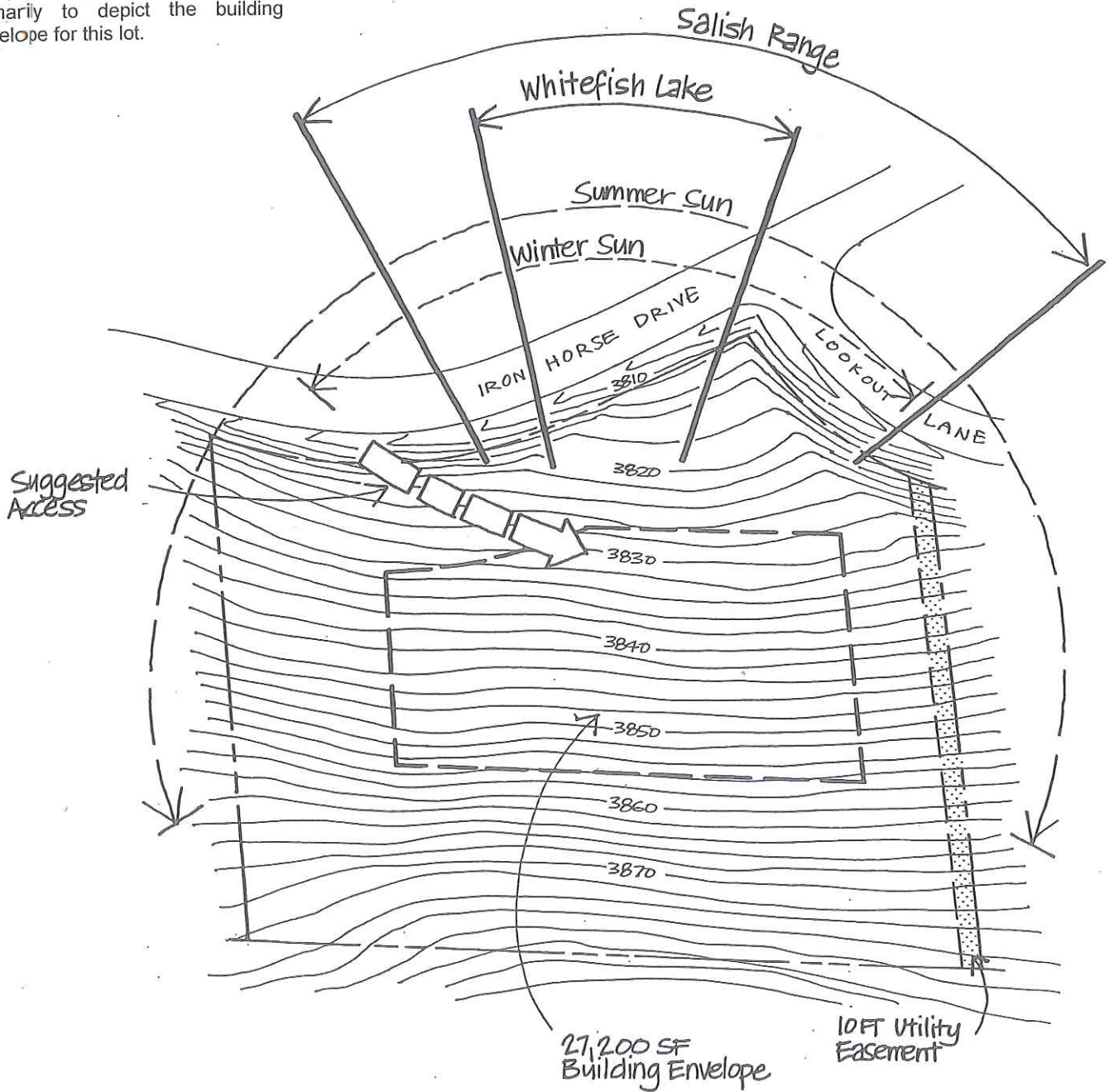


The elevations, topography, road locations, view corridors, and sun exposures shown on this diagram are approximate only. For detailed, exact information or for construction planning purposes, contact a surveyor, architect or engineer. All construction, including site work, must be approved in advance by the Iron Horse Design Review Committee. This lot diagram was not prepared by the Iron Horse Homeowners Association, Inc., and is provided, without warranty, primarily to depict the building envelope for this lot.



# IRON HORSE

## LOT 167



Lot Size : 2.24 ACRES